

Anti-Rat IgG (H&L) (Alkaline Phosphatase Conjugated) Secondary Antibody
Chicken Polyclonal, Alkaline Phosphatase (Calf Intestine)
Catalog # ASR2802**Specification****Anti-Rat IgG (H&L) (Alkaline Phosphatase Conjugated) Secondary Antibody - Product Information**

Description	Anti-RAT IgG (H&L) (CHICKEN) Antibody
Host	Alkaline Phosphatase Conjugated
Conjugate	Chicken
Target Species	Alkaline Phosphatase (Calf Intestine)
Clonality	Rat
Application	Polyclonal
Application Note	WB, IHC, E
	ELISA 1:2,000-1:10,000;Western Blot
	1:500-1:2,500;Immunohistochemistry
	1:200-1:1,000
Physical State	Liquid (sterile filtered)
Host Isotype	IgG
Target Isotype	IgG (H&L)
Buffer	0.05 M Tris Chloride, 0.15M Sodium Chloride, 0.001M Magnesium Chloride, 0.0001M Zinc Chloride, 50% (v/v) Glycerol; pH 8.0
Immunogen	Rat IgG whole molecule
Stabilizer	10 mg/mL Bovine Serum Albumin (BSA) - Immunoglobulin and Protease free
Preservative	0.01% (w/v) Sodium Azide

Anti-Rat IgG (H&L) (Alkaline Phosphatase Conjugated) Secondary Antibody - Additional Information**Shipping Condition**

Wet Ice

Purity

This product was prepared from monospecific antiserum by immunoaffinity chromatography using Rat IgG coupled to agarose beads followed by solid phase adsorption(s) to remove any unwanted reactivities. Assay by immunoelectrophoresis resulted in a single precipitin arc against anti-Alkaline Phosphatase (calf intestine), anti-Chicken Serum, Rat IgG and Rat Serum.

Storage Condition

Store vial at 4° C before opening. DO NOT FREEZE. This product is stable at 4° C as an undiluted liquid. Dilute only prior to immediate use. Freezing alkaline phosphatase conjugates will result in a substantial loss of enzymatic activity.

Precautions Note

This product is for research use only and is not intended for therapeutic or diagnostic applications.

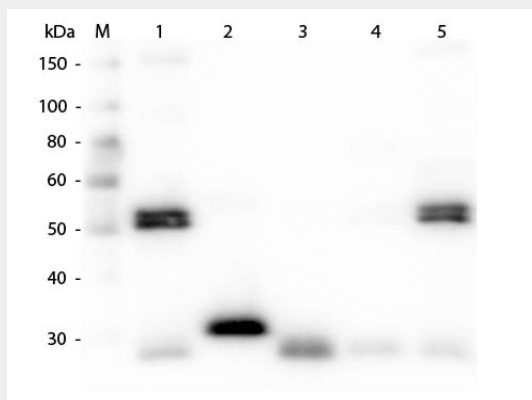
Anti-Rat IgG (H&L) (Alkaline Phosphatase Conjugated) Secondary Antibody - Protein Information

Anti-Rat IgG (H&L) (Alkaline Phosphatase Conjugated) Secondary Antibody - Protocols

Provided below are standard protocols that you may find useful for product applications.

- [Western Blot](#)
- [Blocking Peptides](#)
- [Dot Blot](#)
- [Immunohistochemistry](#)
- [Immunofluorescence](#)
- [Immunoprecipitation](#)
- [Flow Cytometry](#)
- [Cell Culture](#)

Anti-Rat IgG (H&L) (Alkaline Phosphatase Conjugated) Secondary Antibody - Images



Western Blot of Anti-Rat IgG (H&L) (CHICKEN) Antibody . Lane M: 3 μ l Molecular Ladder. Lane 1: Rat IgG whole molecule . Lane 2: Rat IgG F(c) Fragment . Lane 3: Rat IgG F(ab) Fragment . Lane 4: Rat IgM Whole Molecule . Lane 5: Rat Serum . All samples were reduced. Load: 50 ng per lane. Block: MB-070 for 30 min at RT. Primary Antibody: Anti-Rat IgG (H&L) (CHICKEN) Antibody 1:1,000 for 60 min at RT. Secondary Antibody: Anti-Chicken IgG (GOAT) Peroxidase Conjugated Antibody 1:40,000 in MB-070 for 30 min at RT. Predicted/Observed Size: 25 and 55 kDa for Rat IgG and Serum, 25 kDa for F(c) and F(ab), 78 and 25 kDa for IgM. Rat F(c) migrates slightly higher.